

Introduction

In all that we do as believers, we must be grounded in and guided by the Scriptures. We are entering into three weeks of pondering and praying over our desire to grow – to grow in ministry and to expand facilities. Being committed to exposition, we are concerned that these three Sundays are a significant departure from our mission and vision for the public ministry of the Word. Yet, this is the service where most of the church is gathered. This is when we will best be able to cast our vision, to challenge you to participate and to call for your response.

We have chosen to think of this coming ministry year and this project as Growing and Expanding by Faith. We will talk in September about what growing ministry by faith and hard work will look like for us. We will share with you today and the next two Sunday mornings what expanding our facilities by faith and hard work will mean. Flocks will be your opportunity for questions and discussion.

We have placed in your hands a brochure which maps out the next two months, articulates our mission and vision and gives you space for notes. I would encourage you to keep these in your Bibles or notebooks and bring them with you. We are very excited about the possibilities as we believe God's promises, work hard by His enabling provisions of grace and submit to His good providences.

Here is the general path that we are following.

- Define the ministry we aim to do.
- Describe the facility around the ministry
- Present the general concepts
- Call for a funding commitment
- Design the facility
- Present the facility and call for affirmation
- Launch the project

The Elder's Retreat on July 9-10 was a very good time of pondering and praying and preparing for this time together as a people. God was pleased to allow us to meet our aims and objectives.

To get a clear and concise picture of where we are.

To sharpen our vision and energize our efforts for growth.

To evaluate where our current facilities fall short.

To develop and design expansion to suit our present and future needs.

To establish financial guidelines and goals for expansion.

It is our fervent desire that all that we do will be for the good of God's people and the glory of His Name.

Grounded and Guided by the Word

We want to grounded and guided by the Word of God. In considering Growing and Expanding by faith, we are shaped by four important texts.

Working by Faith

1 Thessalonians 1:2-3

We give thanks to God always for all of you, constantly mentioning you in our prayers, ³ remembering before our God and Father your work of faith and labor of love and steadfastness of hope in our Lord Jesus Christ.

Faith is believing God in an obeying way. Real faith in God, in His person and promises, causes us to work. The exemplary church is one who can be commended for their work of faith and labor of love. They are active in the performance of what they believe.

We will believe God so much that we will work hard to bring forth what we desire from Him.

Growing in Faith

2 Thessalonians 1:3

We ought always to give thanks to God for you, brothers, as is right, because your faith is growing abundantly, and the love of every one of you for one another is increasing.

Faith can be grown, increased, cultivated and deepened. This exemplary church was commended for abundantly growing in faith and increasing in love. Their deepening faith in God launched an increasing labor of love for people.

We will grow in faith so much that we will increase our loving labor for people in our ministries and through our facilities.

Seeking Wisdom by Faith

James 1:5-8

If any of you lacks wisdom, let him ask God, who gives generously to all without reproach, and it will be given him. ⁶ But let him ask in faith, with no doubting, for the one who doubts is like a wave of the sea that is driven and tossed by the wind. ⁷ For that person must not suppose that he will receive anything from the Lord; ⁸ he is a double-minded man, unstable in all his ways.

In the challenges of growing and expanding, we want God's wisdom. Many do these things primarily relying on human technique. We want to rely on the wisdom of God – the union of the precepts and principles of God's Word to the particulars of our life and ministry. If we ask God in faith for wisdom, we will receive it. We must not doubt that God will give the wisdom lest we flounder in indecision and loss of clear direction.

We will ask God in faith for wisdom knowing He will give it to us.

Being a Model of Faith

Hebrews 13:7

Remember your leaders, those who spoke to you the word of God. Consider the outcome of their way of life, and imitate their faith.

As a challenge to us as leaders, to the elders and ministry leadership, we want to personally and corporately model the faith, work and loving labor growing and expanding demands. We will lead you where we expect you to follow. We will show you the way by walking in it before you. So, for example, when we challenge you and call on you to sacrificially give, we will tell you what the elders have committed to give.

We will model that faith for your example and encouragement.

Facility - The Concept

Expanding our Facility by Faith

Introduction

SO WHY ARE WE THINKING ABOUT EXPANDING OUR FACILITIES NOW?

For almost 3 years now, the Elders have been pondering and praying over our ministries and facilities. Here is why we are aiming to move forward now.

- We want to grow. We want to see unbelievers come to know Christ. The Elders and want to see the distinctive mission, vision and purposes of the Chapel reach as many Christians as possible. We are all of the view that if we do not build, we will not grow beyond our current size.
- We are full in the auditorium. After carefully evaluating our attendance over the last few years, it is clear that we keep hitting the 80/20 rule – when we are around 80% full or an average on Sunday Morning of around 235-260, we stop growing. We cannot practically put out more chairs in this room without some major changes in the room.
- We are woefully short on classroom space. We constantly have to adjust the ministry we do because of the limits of our facility. Pastor Dale and his CE team, Pastor Greg and the counseling team have done marvels with what we have. But there is a great need – just ask any teacher in learning lambs or Sunday School, including the adults with 2 classes in this room.
- We are projecting a growth path that establishes the following trajectory. *See and show spreadsheet on the next page.*

Growth Projections Worksheet

Average AM Attendance	200	250	300	350	400	500	600
Households	75	94	113	131	150	188	225
Weekly Budget	\$5,250	\$6,844	\$8,213	\$9,581	\$10,950	\$13,688	\$16,425
Annual Budget	\$273,000	\$355,875	\$427,050	\$498,225	\$569,400	\$711,750	\$854,100
Facility							
Auditorium Setup	250	300	360	420	480	600	720
Crib Nurseries	1	2	2	3	3	3	3
Toddler Rooms	1	1	2	2	2	2	2
Pre-School Rooms	1	1	2	2	2	2	2
Seat 20 Rooms	6	6	8	8	10	12	12
Seat 30 Rooms	1	1	2	2	3	4	4
Site							
Parking (Households*1.2	94	117	141	164	188	234	281
Elders/Staff							
Elders (13 households ea	6	8	9	11	13	16	19
Vocational Elders	1	2	2	3	3	4	5
Administrative Staff	0.80	1	1	2	2	3	3
Secretarial/Clerk	0.20	0.5	1	1.5	2	3	3
Janitorial Staff	0.40	0.5	0.75	1	2	2	2
Office Space	2	3.5	4	6.5	7	10	11
Weekly Impact of Added Staff		\$1,202	\$1,477	\$3,194	\$3,784	\$5,566	\$6,528
Annual Impact of Added Staff		\$62,488	\$76,788	\$166,088	\$196,768	\$289,448	\$339,448
Balance		\$20,387	\$77,262	\$59,137	\$99,632	\$149,302	\$241,652
Programs							
Crib	10	13	15	18	20	25	30
Toddler	8	10	12	14	16	20	24
Pre-School	10	13	15	18	20	25	30
Primary	10	13	15	18	20	25	30
Secondary	14	18	21	25	28	35	42
Juniors	12	15	18	21	24	30	36
Junior High	7	9	11	12	14	18	21
Senior High	11	14	17	19	22	28	33
Adults	70	88	105	123	140	175	210
Average Sunday School	152	190	228	266	304	380	456
Major Needs	Chairs	Offices					
Assumptions							
	Present	Projected					
Attendance to Households	2.67	2.67					
Weekly giving per household	\$70.00	\$73					
Annual giving per household	\$3,640.00	\$3,800					

Ministry Purpose

First, let's begin by reviewing our church mission and vision and applying it practically to facility and ministry expansion.

Mission

Our mission is to see the facilities of Clearcreek Chapel expanded through careful planning, unified partnership, principled purposes, articulated values and God-honoring stewardship.

Vision

Our vision is to have a facility that will provide:

- A design that is guided by our values, principles and objectives;
- A project that demonstrates the unity and diversity of our corporate community.
- A beautiful contemporary auditorium for the worship in word and music;
- A large commons for casual, informal and formal fellowship;
- A central, well equipped nursery facility to minister effectively to both parents and children;
- An expanded, useful and flexible design for educational space;
- An expanded and efficient administrative office suite

Values

The following selected values shape the trajectory of our expansion:

Values Relating to Spiritual Atmosphere

- Magnifying the worth of God in every thing that we do
- Going hard after God together as an all-satisfying goal in Himself.
- Being shaped by the Scripture as the fully sufficient and trustworthy revelation of God.
- Being humble and teachable by the Word of God so that we are constantly being stretched and sharpened in our grasp of God's Word and truth.
- Recognizing the role suffering, self-denial and self-discipline must have in refining and maturing for effective ministry.

Values Relating to Corporate Worship

- A public worship form that communicates the supremacy of God in all of life.
- A sustained sense of lingering worship culminating in fervent, life-related, Biblical exposition attended by the ministry of the Holy Spirit.
- Music in our worship which is both God-centered and God-ward and is an expression of the diversity of believers among us.
- Being a singing people who, by the Word and the Spirit, make a joyful noise to the Lord.

- Understanding that in singing psalms, hymns and spiritual songs, we are to edify, encourage and admonish one another.

Values Relating to our Life Together

- Increasingly visible, authentic, practical ways of loving one another.
- Eager openness to new people and organized efforts to incorporate them in the life and ministry of the
- Being vulnerable and transparent in our imperfections so as to encourage candor and openness for change and growth.
- Strategizing and laboring to bring about spiritual formation at all ages aimed at cultivating a knowledgeable, sacrificial, serving maturity, enabling them to be salt and light at all levels of society.
- Giving attention and emphasis to bringing up children in the discipline and instruction of the Lord.
- Developing youth through a discipleship that excites and equips them for mature Christian living.
- Providing Bible teaching for adults in a class setting that stimulates Bible reading, memory, and learning.
- Being engaged with other Christian leaders who sharpen, stretch, challenge and further our understanding of God and His Word.

Values Relating to Church Ministry

- The spiritual shepherding and leadership by elders.
- The diaconal care of our people and service-related ministries.
- The importance of Biblical Counseling for all of life, particularly the development of our Biblical Counseling Center as a place to train effective Biblical counselors, offer hope and help to sin-laden people,
- Use, with excellence, of the spiritual gifts given to all the members of the congregation in ministries of worship, discipleship, service and evangelism.
- Efficient administrative structures shaped by the Word and sustained by prayer.
- Openness and integrity in the wise use of the financial resources given by God's people.
- Full participation in the stewardship of proportional giving by every household.

Values Relating to Church Facilities

- The glory and greatness of God reflected in aesthetic beauty expressed through effective structures.
- Being together in a way that supports the welcome of the unchurched and the worship of believers.
- Finding the third way between extravagant plushness and bare functional practicality.

- Careful planning that makes multi-use of space, prepares for future expansion and allows for phased in development and completion.
- A design that sustains value in the market-place implying carefulness about an overly “church” exterior.

Principles

Design

We aim to design a facility that will incorporate our mission, vision and values. This design should minimize architectural elements having little or no functionality. It should maximize space for multiple use while rooms and suites should have a clear purpose for their use. It should blend well with our current facility, tying the past and future together.

Construction

We aim to build a facility using the most modern construction methods and materials. This design should make effective and efficient use of materials so as to meet the objectives as cost effectively as possible. We aim to contract for the general construction of the facility and to provide as much equity labor and materials as possible,

Financing

We aim to complete the project with as little debt as possible. Funding will be solicited primarily through the giving of God’s people. Funding may also be obtained through loan vehicles maximizing the equity of our property (land).

Ministry and Facility Objectives

As we prayed and pondered over the vision and strategies for ministry, the elders identified our facility/building needs to accommodate that growth. As you hear and consider these ideas, please keep in mind that much of what we will actually do will be limited by every square foot costing \$100 and the building design itself.

General – Needs and Concerns

- A Women’s restroom with 6 stools, one being wheelchair accessible and possibly, a lounge. A Men’s restroom with 3 stools, one being wheelchair accessible, 4 urinals. Near or connected storage closet for the restroom suite
- The main entry being a large Commons for fellowshiping, welcoming, alcoves for seating clusters. For welcoming guests, a reception/Information area with a counter.
- Moving the Chapel Café with a serving counter to the commons. Moving the Bookstore with a sell counter and shelves to the commons. Possibly having a shared reading area between the Café and the Bookstore.
- Expanding the kitchen to add more counters, outlets, a pantry and possibly converting to full service.

Worship – Preaching and Music

- 400 – 500 seat auditorium with flat floors, an elevated baptistry, provision for a future balcony and consideration to movable walls. ~4,000 sq ft
- Large platform with modular choir risers, central instrument location and front surrounded steps. A platform accessible choir room with large walk-in for music/instrument storage and robe/coat closet.
- 2 large front projector screens and projection units.
- Audio/video booth located on the main floor.

CE – Education and Child Care

- 15 sq. ft. for each additional child in each age group: Prefer to arrange in common “pods” able to open to provide larger room activities
- Juniors. 300: 150 sq ft. 400: 300 sq ft
- Primary. 300: 150 sq ft 400: 300 sq ft
- Beginners. 300: 100 sq ft 400 200 sq ft.
- Nursery: 1500 sq ft with central check-in area, sink, stack laundry unit, toddler restroom, “normal” restroom
- CE Workroom/Admin/Storage ~250-300 sq ft
- Adult Classroom space for class sizes: 60, 40, 20 and 20 that may be divisible into smaller “counseling rooms”

CCyM – Youth Ministry

- A youth room large enough to seat 40 – 50 in a teaching setting that is divisible into at least two classrooms that are relatively soundproof, projection ready and containing dedicated white boards and cork/magnet boards, dimmable lighting, in-room storage for ministry materials. 2 20’ x 20’ rooms. 800 total sq ft
- Durable flooring that is easily maintained and has long beauty life and possibly, direct access to outdoors, and possibly, something like a “wet bar” or mini-kitchen in or easily accessed from youth room
- The Youth Room would be dedicated to CCyM on Sundays and multi-function throughout rest of week.
- Indoor activity area (dodge ball, volleyball, etc.)

Administration – Offices and Counseling

- Central controlled access through reception area and a waiting room for appointments.
- Workroom accessible for ministry (copier, printer, paper/ministry supplies).
- Suite of 4 pastoral offices around a central administrative space (office).
- Suite of 2-4 offices for secretarial staff, counseling, missionaries, guest ministry.
- File room for storage, filing and computer server rack.

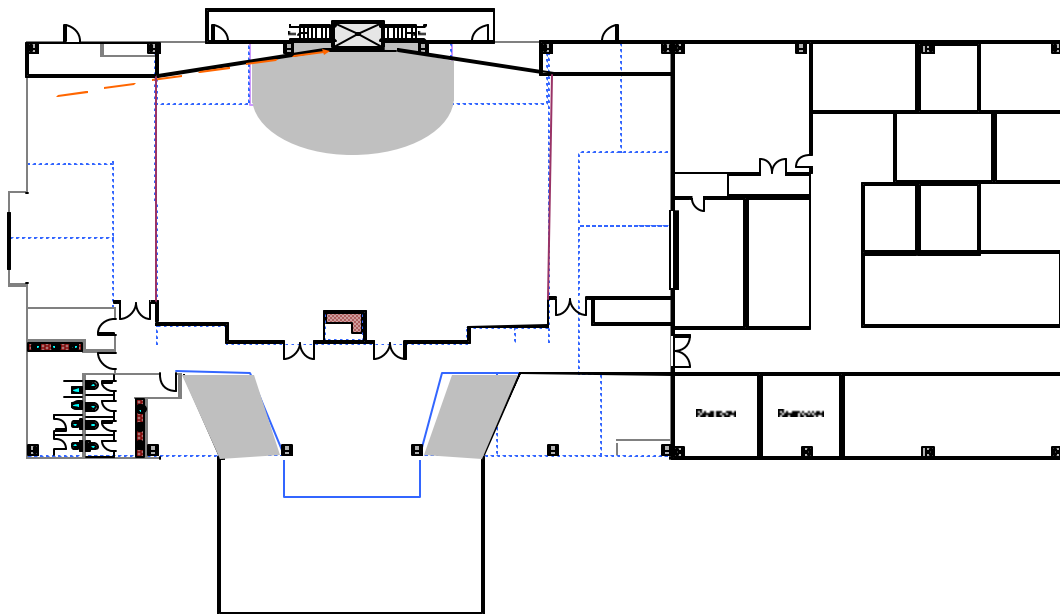
These are objectives, ideas and desires. After we meet with the builders, interact with ministry leaders and see what can be done with the committed money, we will present in October the final design.

Expansion Options

As we have talked with builders and thought over these objectives, we have arrived at one of two options. These are being driven by the financial realities of building today. Anything we do is going to be in the \$80 to \$100 a sq ft. Our builder has suggested two possible layouts. Please note that on both the following drawings, these are NOT proposed floor plans. They have room layouts on them just as a point for discussion.

Concept 1

Remodel/expand current auditorium and build new educational/administrative wing.



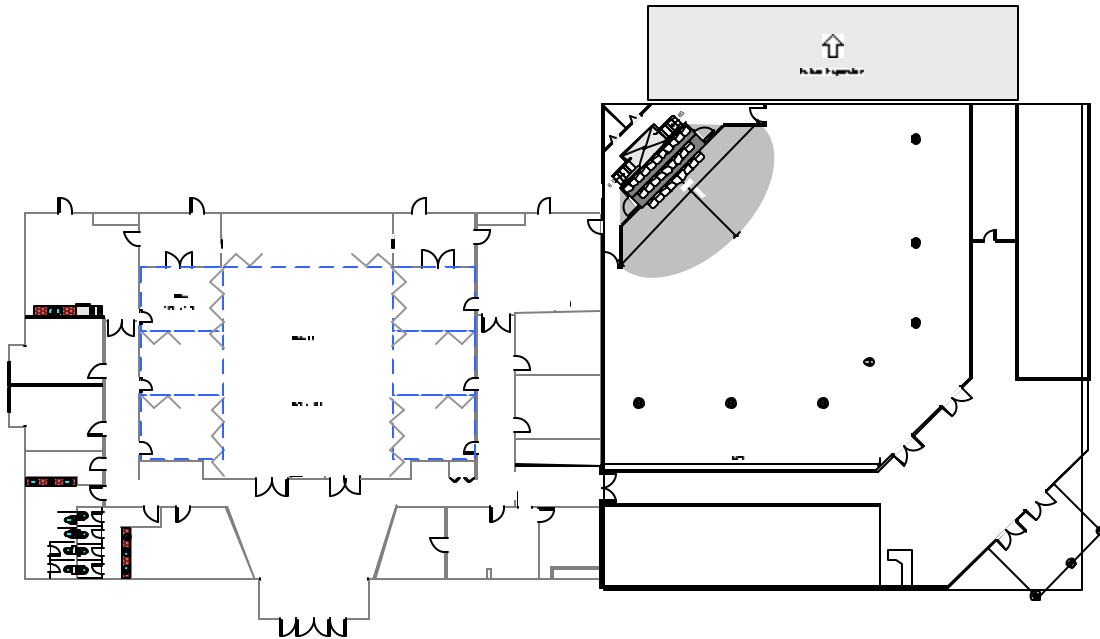
The green space is new space and the blue is remodeled space.

2 Phase Expansion –

1. Add new front and remodel current auditorium to bring seating up to 425.
 2. Build educational wing to add classes and offices
- + Complete design of educational and administrative wing
 - + Solve some immediate problems with auditorium
 - + Allows new kitchen to serve the auditorium over counter.
 - Adding height over platform will be expensive.
 - Without some careful thought to how to phase it, will have no place for worship while remodel goes on (in phases 1 & 3.)

Concept 2

Build new auditorium and remodel current building for educational and administrative expansion.



2 Phase Expansion –

1. Build auditorium and connecting hallway.
- 2.a. Add structure, tracks and ceiling for Panel Walls; (or)
- 2.b. Build curtain walls and hang ceilings.

- + Full design of auditorium as desired.
 - + No disturbing of ministry during either phase.
 - + Less expensive to build – every dollar is gain.
 - + Future expansion of auditorium by balcony
 - + Future expansion of education by attaching to north wall.
 - + Much of the finish work can be done with equity labor.
- Will required careful design of educational space
 - Expansion of administration space limited (maybe into 2 east classrooms)

Conclusion

Call for Unity

One of our very great concerns is that this expansion project not divide us. Many of you have very strong opinions on what we ought to do. But, once decisions are made, we appeal to all to be unified behind what we do. So many congregations and some pastors have been destroyed by an unwillingness to share opinions and then affirm what is being done.

Challenge for Growth

Now there are some important questions and challenges we want you to carefully weigh as we move forward.

- Do you share the vision for the Chapel growing numerically?
- Are you willing to do the hard work of ministry that growth will require?
- Will you sacrificially commit yourself to practically serve and financially support the growth God brings?

We will believe God so much that we will work hard to bring forth what we desire from Him.

We will grow in faith so much that we will increase our loving labor for people in our ministries and through our facilities.

We will ask God in faith for wisdom knowing He will give it to us.

We will model that faith for your example and encouragement.

